



HISTORY LESSON

An old terrace in inner-city Sydney is brought into the here and now while keeping its original charms and quirks largely intact.

STORY *Carli Philips* | STYLING *Madeleine MacFarlane* | PHOTOGRAPHY *Pablo Veiga*



HOUSES H&G

LIVING Ligne Roset 'Pumpkin' armchair and footstool, Domo. Floors custom stained by Acorn Timber Flooring. Curtains by Simple Studio. Coffee table by Jillian Dinkel. Rose leather tray, Becker Minty. Ceramic vessel by Sophie Nolan. Fritz Hansen 'Dot' stool by Arne Jacobsen, Cult. Hexacorallia table lamp, Milly Dent. **STREET ENTRANCE** Front door painted Dulux Klavier. Tessellated tiles, Olde English Tiles. Elstead Stow wall light, LightCo.



‘Perfect imperfection’ is what the owners of this 19th-century Italianate terrace in Sydney’s inner west envisioned for their family home, a place that would have all the necessary trappings for contemporary life without sacrificing the charming idiosyncrasies that come with an older house.

“We wanted to enjoy living in a house full of history where we would never tire of our beautiful surroundings,” say the owners, who are parents of three school-age children. “We bought the house for its original features, so they had to be retained and celebrated, from the wonky walls to the uneven floors.”

Interior designer Jillian Dinkel, who specialises in adapting period properties to modern lifestyles, was completely in sync with this philosophy. “The owners really love and appreciate heritage details so we were very aligned on that point. We approached the project with a conservation mindset, aiming to ensure that original details were dealt with respectfully,” she says. Happily, most of the essential elements were in pretty good shape. The only tricky items were a balustrade that needed repair, and the replacement of some unusual cast-iron fireplace accessories and terracotta-brick vents.

When it came to complementing old with new, Jillian deferred to materials like brass, marble and leather that would patina beautifully to add to the home’s rich lived-in tapestry. She also introduced artisanal elements, such as handmade tiles in the powder room. “Each one is unique, with little bumps and quirks – no two sit perfectly flat next to each other,” says the owner, affectionately. “The windows and doors, all bespoke, are like works of art in themselves.”

To brighten up the entry and create a sense of arrival, Jillian specified marble hexagonal mosaic tiles. A sitting room to the right is outfitted with elegant modern furniture, but as per the owners’ wishes, the ceiling rose, fireplace, sash windows, skirtings and cornices have remained intact. An interconnecting door leads to a study/music room, its proportions slightly irregular, thanks to an existing lift that cuts into the space. Back through the central spine, past the laundry and powder room (originally one space), the corridor expands into a generous open-plan kitchen/dining/family room, which now stands in place of a demolished lean-to. “The old extension had a teeny tiny kitchen and very low ▶

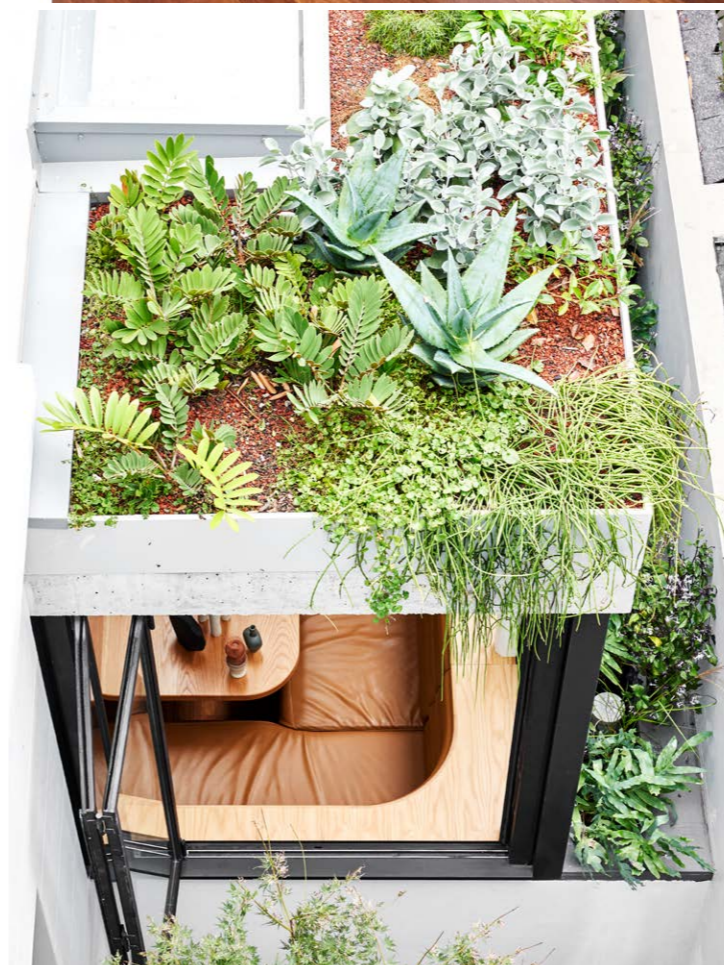
“We bought the house for its original features, so they had to be celebrated, from wonky walls to uneven floors.” HOMEOWNERS



SITTING ROOM *This page and opposite bottom* Apparatus Studio ‘Highwire Tandem’ pendant light, Criteria. Lola sofa, Jardin. Ball cushion, The Creative Muster. Society Limonta ‘Ted’ throw, Ondene. Reeno bench, Grazia & Co. Coffee table by Jillian Dinkel. Vessel by Sophie Nolan. Pink amethyst bowl, Becker Minty. *Study for Milford* painting by Adriane Strampp, Gallerysmith. Thomas O’Brien ‘Library’ picture light and ‘Mia’ floor lamp, both The Montauk Lighting Co. HC28 ‘Bold’ armchair, Domo. Walls painted Dulux Narrow Neck. **FOYER** *Opposite top* Floor tiles, Teranova. Clements mirror, MCM House. Console, Zuster. Black Lotus vessel, Becker Minty. Custom Branchbubble pendant light, Giffin Design.



KITCHEN/LIVING This page and opposite top left and bottom right Island facing, benchtops and splashback in Grigio San Marco marble, Euro Marble. Feature joinery in Ashgrove veneer, New Age Veneers. Recessed cabinet pulls, MadeMeasure. Icon kitchen mixer, Astra Walker. Arc Hydro tap, Zip. Hof stool, Great Dane. Archier 'Highline' pendant light, Rakumba. Custom dining table and Offset coffee table by Jillian Dinkel. No.811 Hoffman dining chair, Thonet. Fogie 'Retreat' sofa, Fred International. Cushions, Lucy Montgomery. Artwork by Theresa Hunt, Curatorial+Co. **DINING** Opposite, top right Banquette upholstered in Ascona leather, Pelle Leathers. Dinner plate and vase, Provider Store. Vistosi 'Lucciola' wall light, Lights Lights Lights. Candles, Hermetica. Napkin, In Bed. Sunflower dishes, Milly Dent. **ROOFTOP GARDEN** A rooftop garden flows out from the main bedroom, with the dining banquette glimpsed below. ▶



LIVING Ligne Roset 'Pumpkin' armchair and footstool, Domo. Sencillo rug, The Rug Establishment. Floors custom stained by Acorn Timber Flooring. Curtains by Simple Studio. Coffee table by Jillian Dinkel. Fritz Hansen 'Dot' stool by Arne Jacobsen, Cult. Fogie 'Retreat' sofa, Fred International. Cushions, Lucy Montgomery. Painting by Theresa Hunt, Curatorial+Co. Throw, Hale Mercantile Co. Apparatus Studio 'Triad 9' pendant, Criteria. Steel frame doors, Kora Metal Design. Real Gas fireplace, Flame Pure Vision 1000. ▶





DAUGHTER'S ROOM This image, below left and below right Tori wallpaper in Duck Egg, Graham & Brown. Antique bed and chair. Blinds, Simple Studio. Existing bedside table. Kate Spade 'Ellery' lamp, The Montauk Lighting Co. Rug, The Rug Establishment. Door and wainscoting painted Dulux Silver Twilight. **DAUGHTER'S ENSUITE** Right Norwegian Rose marble vanity top, Granite & Marble Works. Icon tapware, Astra Walker. Suzanne Kasler 'Camille' sconces, The Montauk Lighting Co. Issy by Zuster shaving cabinet, Reece. Wall tiles, Surface Gallery. **SON'S ROOM** Opposite Sierra rug, Armadillo & Co. Villa 'Oh' side table, Plyroom. Flowerpot VP3 lamp and Hay 'About a Chair' desk chair, Cult. Window frame, skirting and joinery in Dulux Water Worn; walls painted Dulux Natural White. Blinds, Simple Studio. Artworks: *Rivermouth* by Peter Stevens (above bed) and *Hanging Fowl* by Peter Godwin (on desk), both Defiance Gallery.



THE PALETTE

Dulux Narrow Neck (sitting room)

Dulux Silver Twilight (daughter's room wainscoting)

Dulux Water Worn (son's room trims)



ceilings that were ill-suited to the proportions of the house," says Jillian. Since nothing in the space was salvageable, the structure was demolished and the designer took the opportunity to deliver a kitchen, dining and family room that are both pretty and practical.

The enlarged kitchen is designed in a galley layout, with the dining zone opposite occupying what was once an unused internal courtyard. A flat archway connects the kitchen/dining with the adjacent family room, where the ceiling height extends to a lofty 4.5 metres. "Jillian understood how busy we are and that the design of the house needed to make our lives easier. The dining space is a perfect example – it's not just a place to eat as a family, but also a place to entertain, to do homework, play board games and have lively family discussions. It's a generous living zone where we can all relax together without feeling on top of one another," says the owner.

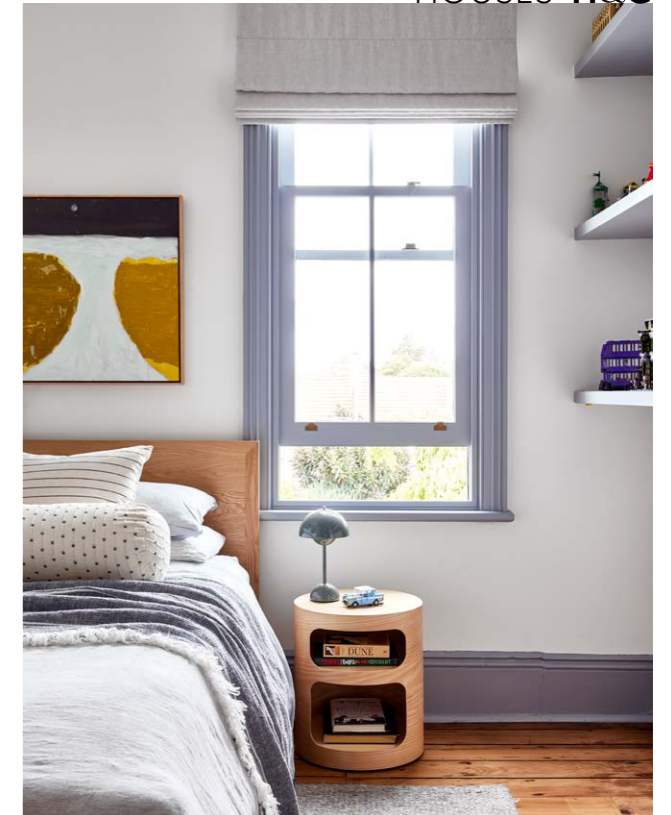
Upstairs, their daughter's bedroom and ensuite is on a split level. It lacked any traditional characteristics so Jillian added wainscoting and blue wallpaper. Antique heirloom furniture peppers the room and what was once a miniature ensuite has been reconfigured with the introduction of a nib wall to divide the vanity from the open shower. "The pink and cream tessellated tiles on the floor and the pink Norwegian rose marble transformed this ensuite into a feminine little jewel box with pops of drama and whimsy," says Jillian.

A few steps lead up to the main bedroom suite, now reimagined as a "five-star hotel experience", says Jillian. "The project spanned much of the Covid lockdowns and we wanted to bring some wanderlust into the home for the family and the travel they had been missing." The concept involved partitioning the room with joinery that doesn't quite meet the top of the ceiling. One side serves as a wardrobe wall, the other side functions as the bedhead. The soothing scheme has a palette of muted hues and beautiful period features, such as the French doors that open onto a balcony.

The whole second floor is dedicated to the boys, planned with a shared bathroom and two generous bedrooms that were given a decorative freshen up in shades of blue. On the third floor there's a converted attic and study with incredible city views. "It's our dream house," says the owner. "We never want to move again."

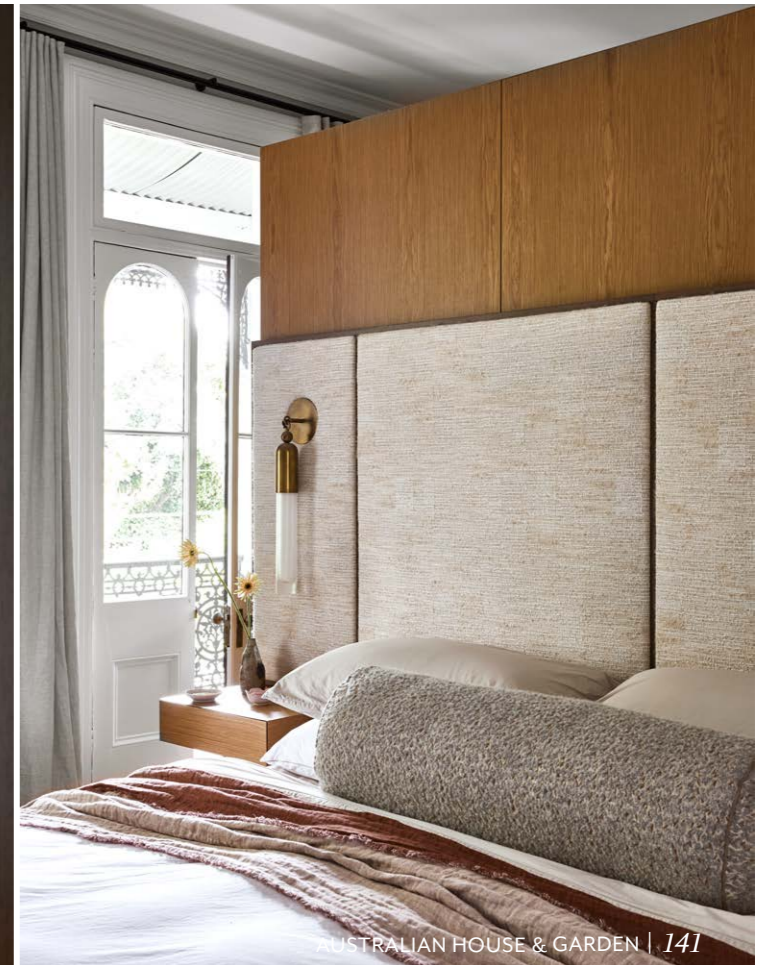
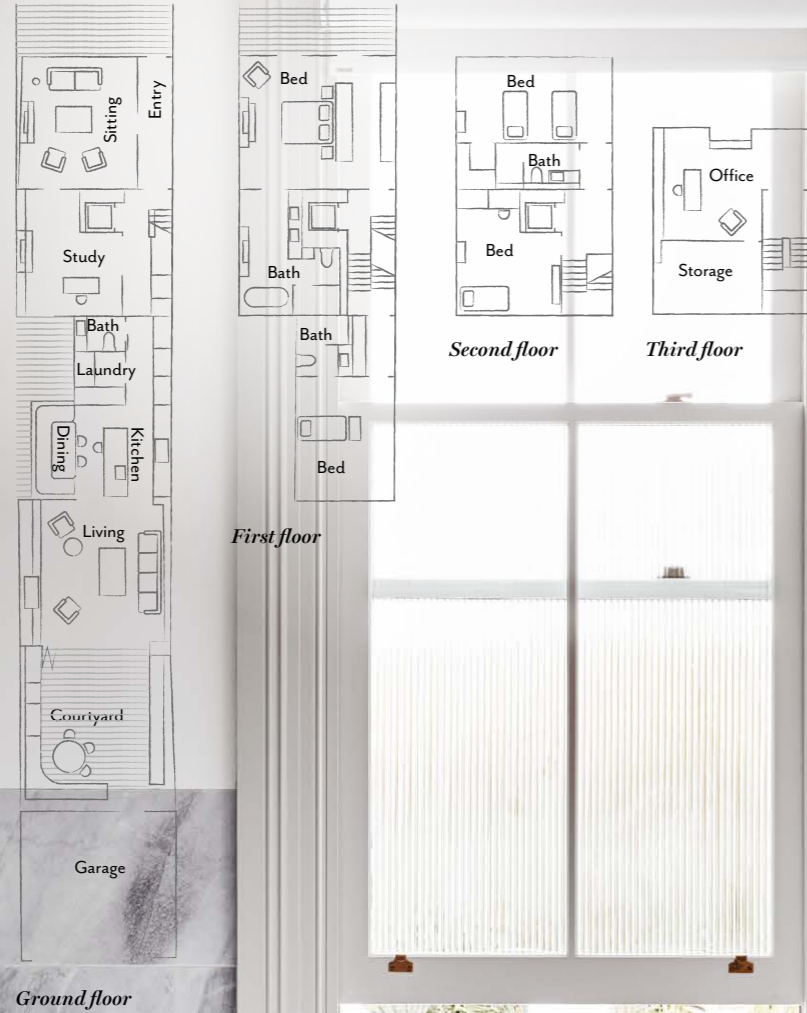
Jillian Dinkel Designs, Mosman, NSW; jilliandinkel.com. Interlock Construction, Chatswood, NSW; 0481 224 227 or interlockconstruction.co.

Paint colours are reproduced as accurately as printing processes allow.



"Jillian understood how busy we are and that the design of the house needed to make our lives easier." HOMEOWNERS

THE LAYOUT



MAIN ENSUITE Elba marble tiles, Artedomus. Kaldewei 'Meisterstück' bath, Reece. Icon floor-mounted basin mixer, Astra Walker. Sam Holmes 'Susie' stool, Hake House. Bees wall art by Richard Stringer, Mondopiero. Window frame painted Dulux Narrow Neck. MAIN BEDROOM Opposite Curtains, Simple Studio. Friends and Founders 'La Pipe' lounge chair, Fred International. Moro Crush double linen throw, Hale Mercantile Co. Custom console by Jillian Dinkel. Lincoln T-bar handles, Armac Martin. Sculpture by Sophie Nolan. Trays, Great Dane. Clements mirror, MCM House. Branchbubble pendant light, Giffin Design. Apparatus Studio 'Tassel 1' sconce, Criteria Emi Ceramics 'Suna Sand' vessel by Melody Brunton, Hake House. Sheru scallop dish and mini pink dish, both Provider Store. Rose gold circle with central swirl artwork by Anya Pesce, M Contemporary. Cloud drawers, Zuster. Custom silk rug, The Rug Establishment. Walls painted Dulux Narrow Neck. ▶

THIS IS THE LIFE

The owners say that engaging Jill to help renovate the house was one of the best decisions they made. "She understood how important the home's heritage features were to us. We love how she used materials like handmade tiles with little bumps and quirks, and brass and leather that will patina over time. It will only get better with age."

REAR COURTYARD Stool and cushions, all Lucy Montgomery. Jak chair and Jill dining table, both Tait. Huddle vessel and Marbled Gem cups, all Milly Dent.



THE SOURCE

Organic materials and artisanal elements meet neutral tones for the ultimate blend of old and new.



Produced by Saffron Sylvester. Photograph by Simon Shiff (sliding doors).

- 1 Apparatus 'Triad 12' linear pendant light, POA, Criteria.
- 2 1977 Sofa chair module in Leura Wattle, \$1115, King Living.
- 3 Suzanne Kasler 'Camille' sconce, \$790, The Montauk Lighting Co.
- 4 Steel-framed sliding doors, POA, Steel Window Design.
- 5 Breville 'The Barista Touch Impress' coffee machine, \$1949, Harvey Norman.
- 6 Weave Home 'Vito' cushion in Olive, \$99.95, Textured Design Group.
- 7 Gooseneck Wall-mounted Swivel mixer tap in Brushed Copper, \$159.90, ABI Interiors.
- 8 Camden dining table (3x1.2m), \$4499, Freedom.
- 9 Astoria towels, from \$12 each, Greg Natale.
- 10 Hof stool by Jonas Bohlin, from \$2450, Great Dane.
- 11 Bambucha timber-look laminate benchtop surface, POA, Kaboodle Kitchen. H&G