

Art in motion

The ebb and flow of a once-upon-a-time waterway was the inspiration for this dynamic home that defies convention in so many clever ways

WORDS CARROL BAKER PHOTOGRAPHY SIMON WHITBREAD



Ignimaximus conet, sim que nonsedi
dolupisquo exerspe ritati aut



DETAILS

HOUSE Zig Zag House
LOCATION Kensington, NSW
INITIAL BUDGET \$1 million
FINAL COST \$1.6 million
DATE COMMENCED September 2018
DATE COMPLETED July 2021

a concertina pleated
roofline and playful “jetty”
extending into the rear
yard are among many of the
striking features woven into the fabric of this
remarkable home.

The existing Federation-style house, with a rear addition, stood among its contemporaries in the tree-lined suburban street. Daniel Stukel Beasley, director of Stukel Architecture, says the homeowners sought an adventurous and daring design that would make a big visual impact. “They wanted something that was bold and atypical to the other surrounding cottages in the neighbourhood while retaining the original house,” says Daniel.

The homeowners wanted a home for retirement and had a clear vision of what they were after: open-plan living spaces, a seamless connection to the outdoors, and a ceiling that was a showstopper. “The team worked hard to conceptualise and deliver an exceptional result,” says Daniel. Indeed, it is a design triumph, with a soaring ceiling and captivating shapes to ponder.



Ignimaximus conet, sim que nonsedi
dolupisquo exerspe ritati aut

“THEY WANTED SOMETHING THAT WAS BOLD AND ATYPICAL TO THE OTHER SURROUNDING COTTAGES IN THE NEIGHBOURHOOD WHILE RETAINING THE ORIGINAL HOUSE”
- DANIEL STUKEL BEASLY

**EDITOR'S
FAVOURITE**

THE STRIKING CONCERTINA
OVERHANG TO THE REAR
THAT TAKES THE DESIGN
FROM INSIDE TO OUT

Ignimaximus conet,
sim que nonsedi
dolupisquo exerspe
ritati aut



Ignimaximus conet, sim que nonsedi
dolupisquo exerspe ritati aut



Ignimaximus conet, sim que nonsedi
dolupisquo exerspe ritati aut

The existing rear extension was removed and a large open-plan kitchen, living and dining space was created, along with a powder room, integrated with an internal laundry. The first floor is made up of three bedrooms that include an ensuite, dressing room, main bathroom and study. A grand staircase with a commanding presence connects the old and new parts of the home and is a focal point.

One of the most ambitious aspects was the roofline. There was much to consider in terms of design, structural elements, and then delivering the final vision in built form. "This was achieved by slicing up the 3D model to prepare computer numeric controlled (CNC) cut plywood ribs, to guide the ceiling tracks and ultimately the ceiling lining," explains Daniel. "Materials and construction methods

were pushed to their limits, with the lining requiring a subtle twist."

The interiors are handsome; a mixture of materials have created interesting forms and many are used in surprising ways, taking ordinary materials and putting them to extraordinary use. One example was the use of conventional plasterboard. "By taping and setting it, we created an unrecognisable homogenous sculptural surface," enthuses Daniel. "This gives the materiality of the ceiling and roof a puzzling ambiguity."

Other feature materials include crown-cut oak timber veneer in the staircase handrail and kitchen cabinetry, and the Oregon concrete walling in which you see different grain patterns of the timber. The project pays testament to exceptional craftsmanship and good design in so many ways.

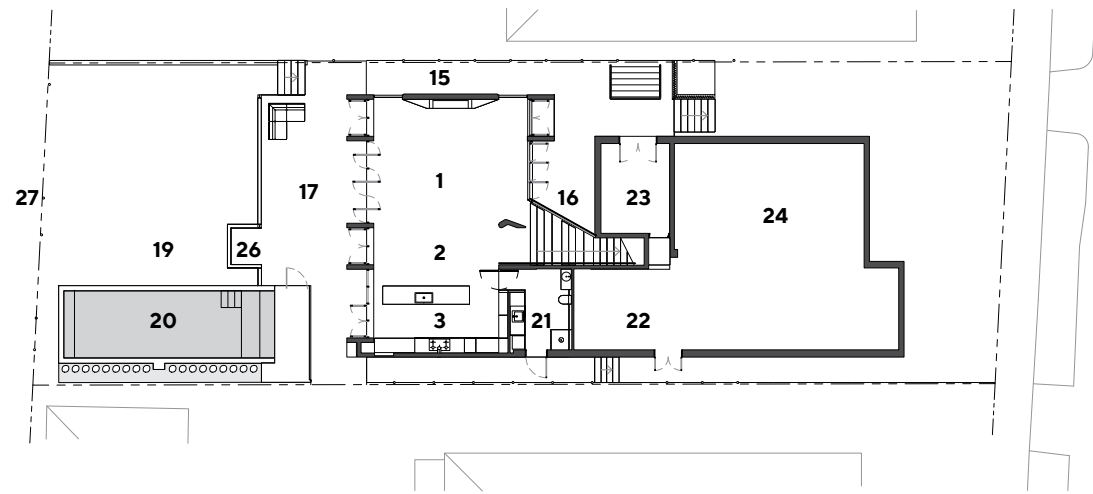
With the home's orientation to the west, providing protection was key. This was addressed with deep overhangs, concealed roller blinds and shading from the sculptural pergola. It is well insulated, with ample opportunities for cooling breezes to flow through. Passive heating to the floor slab is augmented by hydronic heating in the cooler months. Solar panels and a rainwater tank have also been fitted.

Daniel says that for him, a standout in the project is the use of the blade column as a device to divide the circulation down the central staircase. "It stands as an engaging character in the centre of the space, inviting the occupants to brush by either side, tracing their hand along the sinuous surface," he shares. 🏡

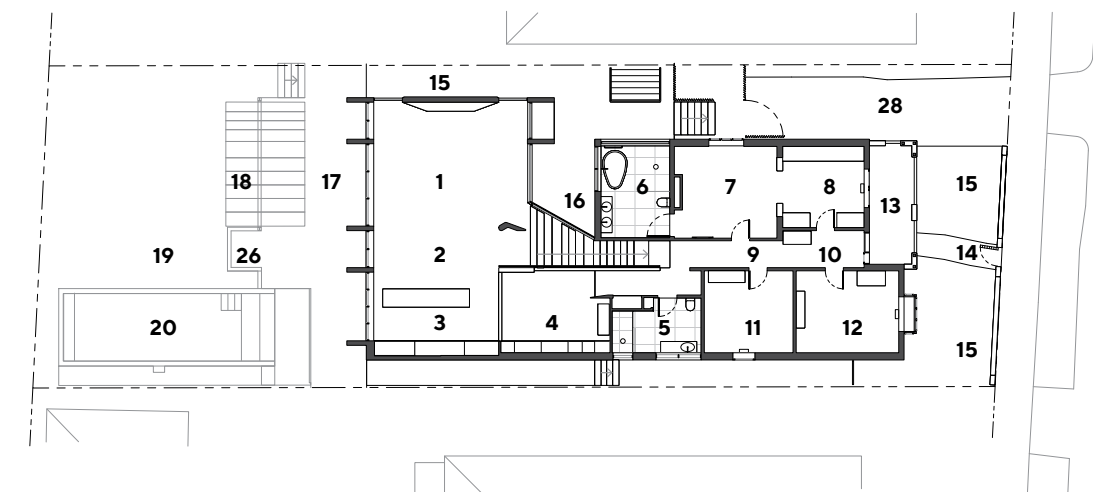


Ignimaximus conet, sim que nonsedi
dolupisquo exerspe ritati aut





LOWER FLOOR PLAN



UPPER FLOOR PLAN

LEGEND

- 1 Living
- 2 Dining
- 3 Kitchen
- 4 Study
- 5 Bathroom
- 6 Ensuite
- 7 Bedroom
- 8 Dressing room
- 9 Hall
- 10 Entry
- 11 Guest bedroom
- 12 Study
- 13 Patio
- 14 Path
- 15 Garden
- 16 Courtyard
- 17 Terrace
- 18 Pergola
- 19 Lawn
- 20 Pool
- 21 Laundry
- 22 Equipment
- 23 Storage
- 24 Underfloor
- 25 Roof storage
- 26 Jetty
- 27 Culvert
- 28 Parking



Ignimaximus conet, sim que nonsedi dolupisquo exerspe ritati aut

PROJECT TEAM

ARCHITECT, DESIGNER AND INTERIOR DESIGNER Stukel Architecture, stukel.com.au
BUILDER AJP Constructions, ajpconstructions.com.au

WE LOVE

THE LEAFY SHOWER WALL THAT SOFTENS THE SPACE BY INVITING IN NATURE



Ignimaximus conet, sim que nonsedi dolupisquo exerspe ritati aut



Ignimaximus conet, sim que nonsedi dolupisquo exerspe ritati aut



Ignimaximus conet, sim que nonsedi dolupisquo exerspe ritati aut

STRUCTURAL TEAM

Cladding Corten Australia
Cladding HVG Facades
Roof supplier Lysaght
Soffits and eaves CSR

SERVICES

Venetian plaster Venetian Plaster NSW
Hydronic floor heating Comfort Heat
Switches Hager
Air conditioning Daikin
Gas fireplace Stoke

Fireplaces

Colour consultant Lick Colour
Pool contractor supplier Senator Pools
Soft landscape designer Adam Robinson Design

FIXTURES & FITTINGS

Lighting Fos Lighting
Lights lilus
Tiles Di Lorenzo Tiles
Stone benchtop SNB Stone

Joinery broker Improva

Joinery contractor Interex

Tile splashbacks

Cosentino

External blinds Verosol

External heaters Bromic

Kitchen appliances

Winnings

Wet area fixtures Sydney

Taps

Kitchen stainless-steel

surround Rimex Metals