

DAWN *to dusk*

Conceived to invite in the rays of both the rising and setting sun, this majestic family home is a monument to modern architectural design.

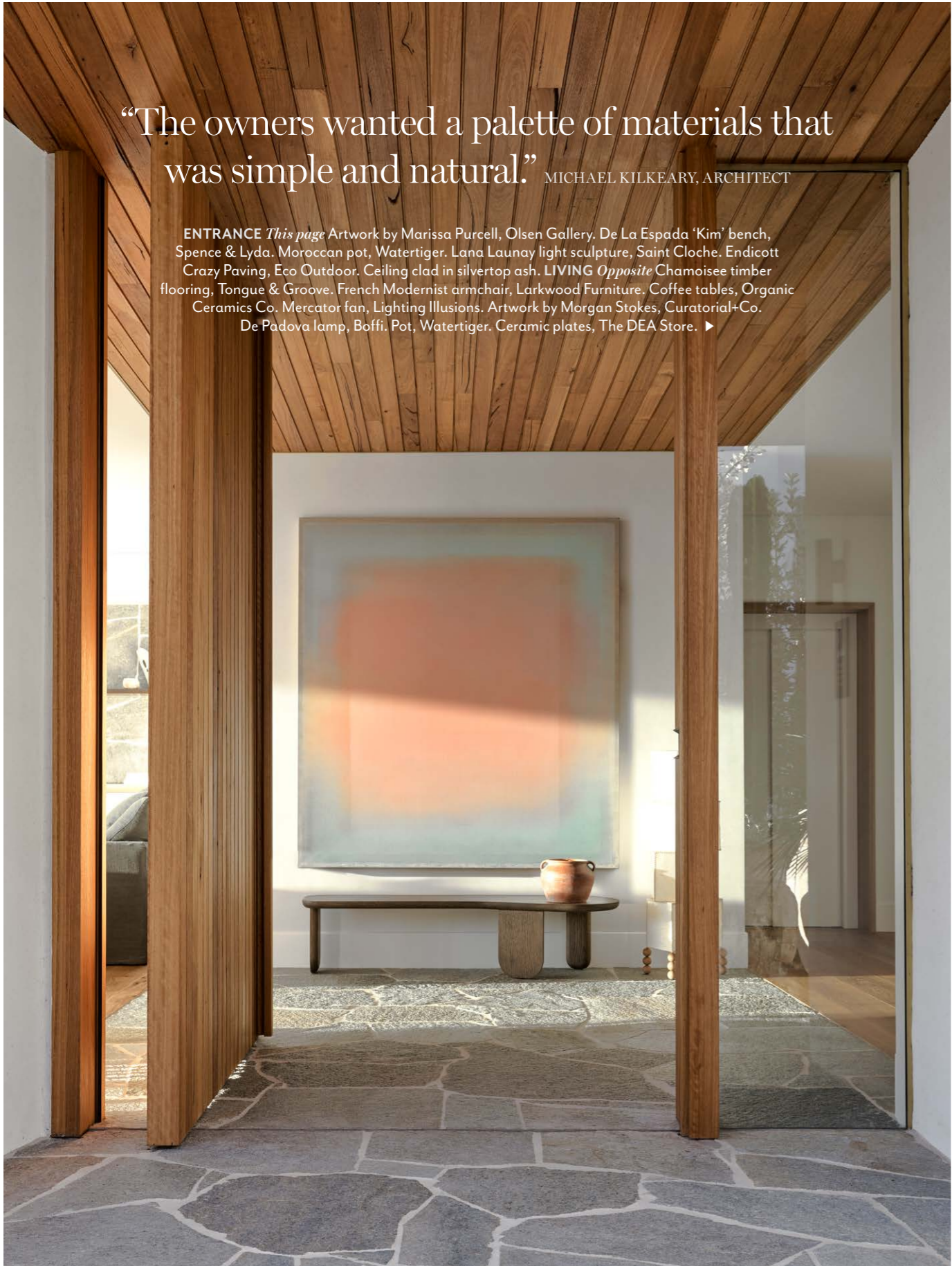
STORY *Vanessa Walker* | STYLING *Joseph Gardner* | PHOTOGRAPHY *Anson Smart*



EXTERIOR The home has a square geometry, with various forms clad in Victorian ash, which will be left to age and silver over time. The render has been made with a specialist paint that has a part-sand content to achieve a natural and soft-white finish.

“The owners wanted a palette of materials that was simple and natural.” MICHAEL KILKEARY, ARCHITECT

ENTRANCE *This page* Artwork by Marissa Purcell, Olsen Gallery. De La Espada ‘Kim’ bench, Spence & Lyda. Moroccan pot, Watertiger. Lana Launay light sculpture, Saint Cloche. Endicott Crazy Paving, Eco Outdoor. Ceiling clad in silvertop ash. LIVING *Opposite* Chamoisee timber flooring, Tongue & Groove. French Modernist armchair, Larkwood Furniture. Coffee tables, Organic Ceramics Co. Mercator fan, Lighting Illusions. Artwork by Morgan Stokes, Curatorial+Co. De Padova lamp, Boffi. Pot, Watertiger. Ceramic plates, The DEA Store. ▶



With a spectacular outlook to the east over the harbour, and leafy district views west, this Sydney residence has been designed to allow the first light of day and the last rays of sunset to reach into its generous rooms.

Designed as a new build by architecture, interior design and construction firm Cadence & Co, it is a dream home for a couple with a young child, who came to the firm asking for a four-bedroom, three-bathroom family home imbued with a sense of relaxed luxury and replete with Mediterranean-resort touches.

The couple wanted the home to accommodate a flexible floor plan and provide a visual connection between the kitchen and living spaces to a rear garden and pool, and the sea views beyond. They also wanted enough rooms for overseas family members who come to stay for long periods, as well as a kitchen set up for entertaining and as a central gathering point.

Materiality was an important aspect of the brief. "The owners very much wanted a palette of materials that was simple and natural, without the need for constant maintenance and upkeep, and with natural weathering over time," says Cadence & Co's design principal and project lead, Michael Kilkeary.

Today, after an 18-month build delayed by Covid lockdowns and subsequent supply issues, the residence stands quietly ▶

LIVING/DINING *This page and opposite* Gervasoni '95' pendant lights, Anibou. Afeni dining table, Living By Design. Sculptures by Bettina Willner (this page) and Samantha Arnull (opposite), Saint Cloche. Grace sofa, Crafted Furniture. India Mahdavi Bishop side table, Studio Alm. Sam Kasten Cactus loop rug, MM Design. De Padova woven armchair, Boffi. E15 'Backenzahn' stool, Living Edge. Coffee tables, Spence & Lyda. Artwork by Ana Young, Curatorial+Co.

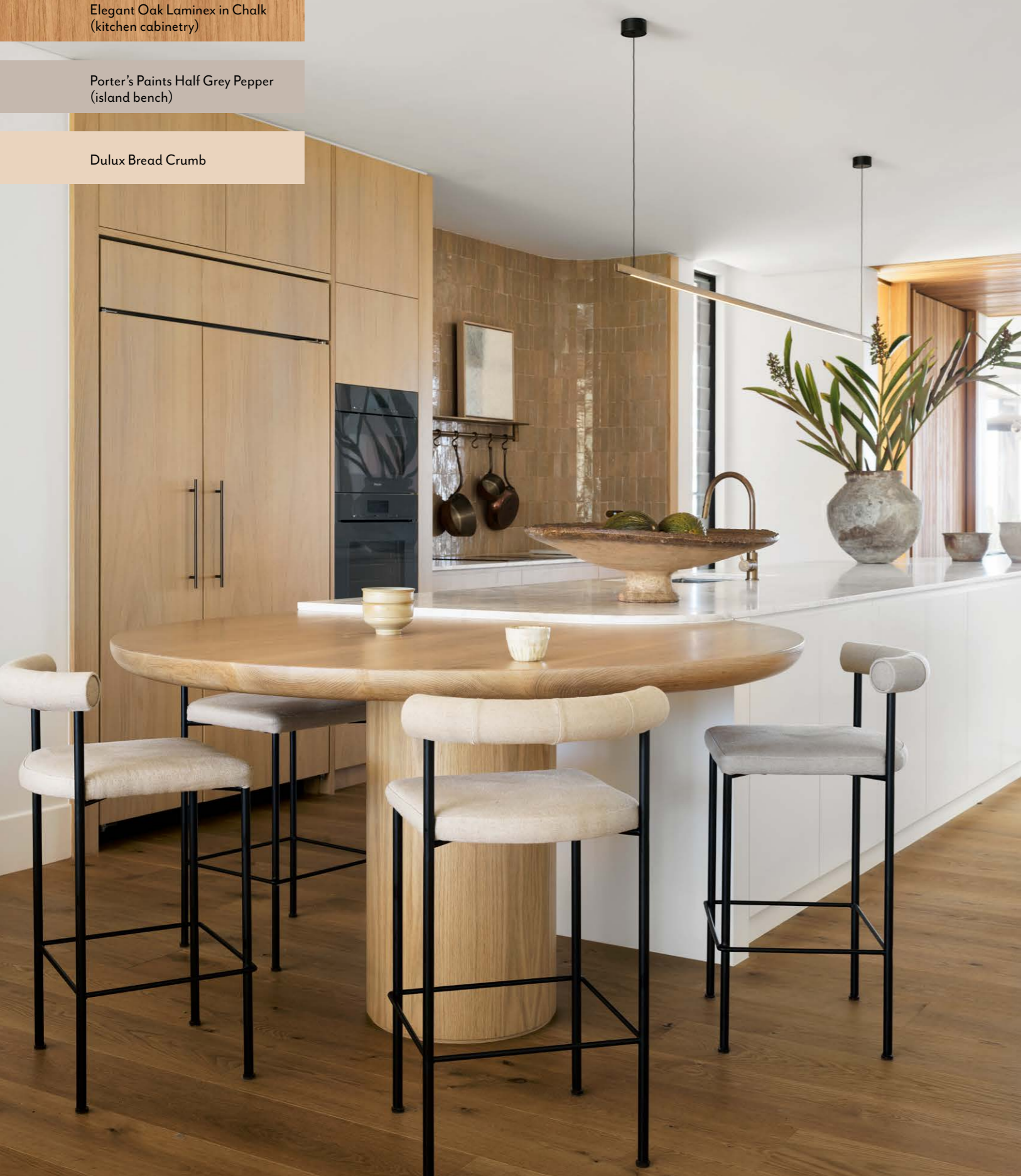


THE PALETTE

Elegant Oak Laminex in Chalk
(kitchen cabinetry)

Porter's Paints Half Grey Pepper
(island bench)

Dulux Bread Crumb



KITCHEN Full-height cabinetry finished in Laminex Elegant Oak. Island bench finished in Porter's Paints Half Grey Pepper. Kitchen benchtop in honed Ananke marble, Euro Natural Stone. Highline pendant, Rakumba. Moroccan terracotta tiles (on splashback), Bisanna. Resident Kashmir barstools, District. Moroccan footed bowl and pot (as vase), both Watertiger. Artwork by Ana Young, Curatorial+Co. Chamoisee flooring, Tongue & Groove.

Paint colours are reproduced as accurately as printing processes allow.

on the sloping 450-sqm site. Victorian and silvertop ash cladding on the exterior are paired with an interior rendered in a subtly undulating and lightly textured plaster; a material choice that references the Greek heritage of one of the owners.

Throughout the home, there is a focus on materials that are expressed in their natural form, or that have a sense of being handcrafted, such as the hand-glazed Moroccan terracotta tiles that feature in the kitchen and ensuite, and the stone flooring in the adjacent outdoor spaces (and which also appears as a wall feature in the living area).

The entry path is lined with lush coastal foliage and ground cover that, when mature, will spill over and almost obscure the hardscaping. Crazy paving and a slatted timber ceiling used in the portico are continued indoors past a large pivot door. "The size of the door and the pivot function, combined with the crazy paving running internally, allows the entry itself to almost disappear when the door is held open," says Michael.

From here, engineered-timber flooring radiates out in each direction. To the east is the formal living and dining room space, which opens out onto a terrace. This area is furnished in a slightly finer style and is conceived to facilitate conversation. While, for

the most part, the house has a square geometry, Michael employed curves in select locations as a way of gently entering into spaces, including a softer corner leading into this area.

To the west of the entrance lies the kitchen, which has a clean, streamlined aesthetic and handleless cabinetry. A generous island bench transforms at one end into a round oak table for casual dining. This area also houses a butler's pantry, study and laundry. Beyond this are casual living and dining spaces. A shapely, organic staircase, topped with a bronze ribbon handrail, leads upstairs to the bedrooms, ensuite, and a sitting room, and downstairs to the garage and workshop.

The beauty of the layout is that it allows broad sightlines from the kitchen; taking in both living spaces, panoramic views to the east, and the pool to the west. By design, this arrangement also allows for the easy supervision of young children.

In time, the olive trees and broad-leaved banana palms will also screen the neighbouring properties and create a sense of the home being a private sanctuary... just what the family always dreamed of.

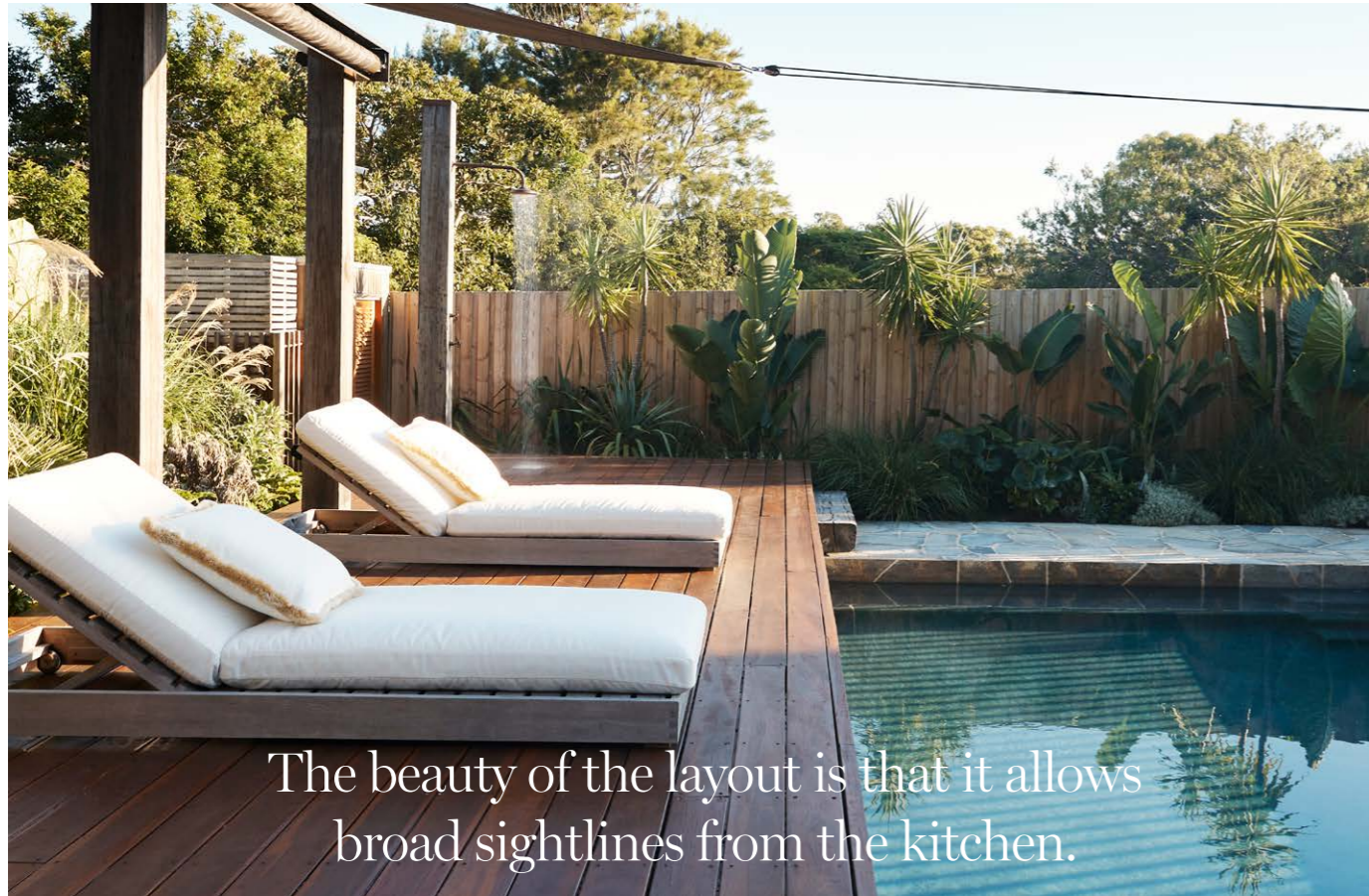
► *Cadence & Co, Sydney, NSW; cadenceandco.com.au. Adam Robinson Design, NSW; adamrobinsondesign.com.*



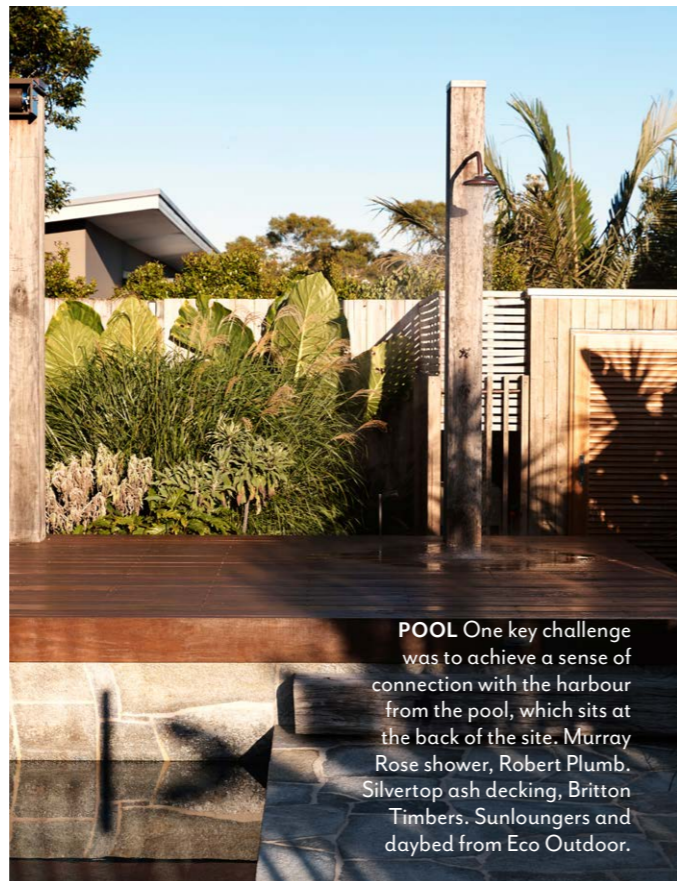
MAIN ENSUITE *This page and opposite bottom, left and right* 'Aura' bath, Caroma. Solo porcelain floor and wall tiles, Di Lorenzo Tiles. Hand-glazed Moroccan terracotta tiles on splashback, Bisanna. Tapware, Astra Walker. Custom cabinetry by Cadence & Co. Vase by Valerie Vigar, Saint Cloche. Shigaraki dish by Tetsuya Kowari, The DEA Store. **STAIRWELL** *Opposite, top left* Custom handrail, All Metal Projects. **BEDROOM** *Opposite, top right* Manzanilla Cream abaca rug, International Floorcoverings. Palecek Woodside canopy bed, Boyd Blue. Custom ottoman, Crafted Furniture.

THIS IS THE LIFE

With an appreciation of resort living and an abiding connection to the Mediterranean, the owners wanted the home to have a sense of relaxed luxury. Private spaces feature natural woven textures with a tactile quality, which grounds them against the expanse of water, sun and sky they look to. With a young child, easy-care surfaces and natural materials were also important. ▶



The beauty of the layout is that it allows broad sightlines from the kitchen.



POOL One key challenge was to achieve a sense of connection with the harbour from the pool, which sits at the back of the site. Murray Rose shower, Robert Plumb. Silvertop ash decking, Britton Timbers. Sunloungers and daybed from Eco Outdoor.



1

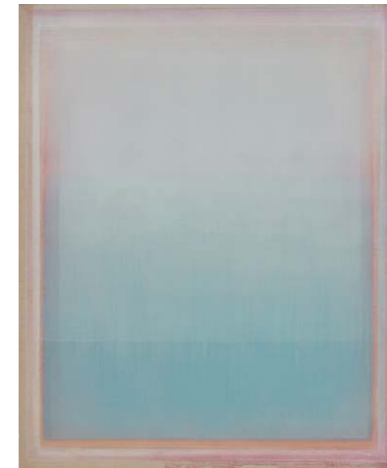
THE SOURCE

Channel effortless resort style with natural woven fibres and grounding materials of timber, stone and brass.



2

3



4



5



6



7



8



9

Produced by Saffron Sylvester.

1 Bishop stool in Powder Pink, POA, India Madhavi. 2 Gervasoni 'Brass 95' pendant, \$1590, Anibou. 3 Residue artwork by Marisa Purcell (137x112cm). 4 Lainy counter stool in Ivory, \$249, Freedom. 5 Tilde rug in Natural (2.7x1.8m), \$990, Hali. 6 French Modernist armchair in Natural, \$1300, Larkwood Furniture. 7 B&B Italia 'Tobi-Ishi' table, POA, Space. 8 Vera fringe cushion, \$99.98/set of 2, Living by Design. 9 Sola outdoor shower set in Brushed Gunmetal, \$2989.90, ABI Interiors. H&G